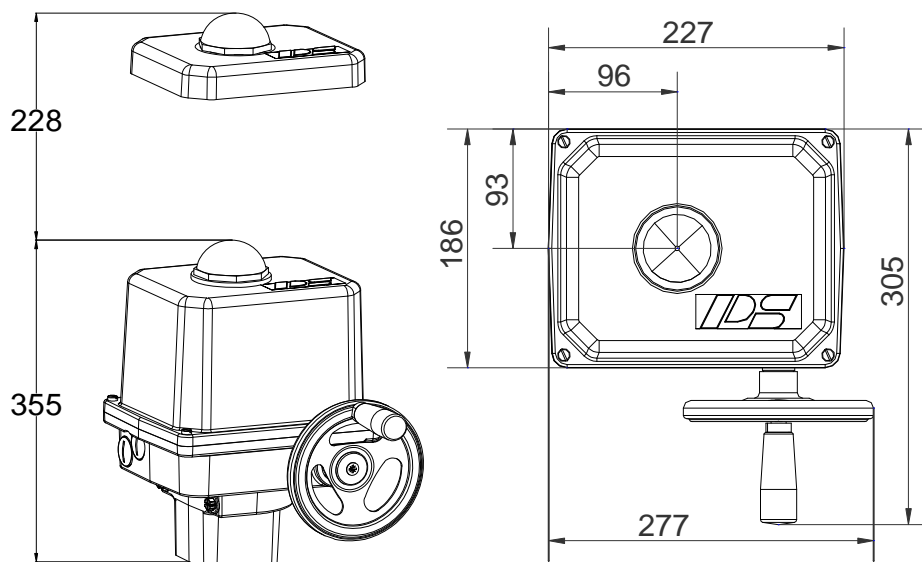


Electric Quarter Turn Actuator

PSQ203



250 Nm

Switching Torque
125 Nm Modulating Torque¹⁾

20 s - 69 s
Operating Time/90°

Flange
F07 + F10

Modulating Actuator
Class C
EN 15714-2

Enclosure IP67
EN 60529

Operating Time/90°	20s [50Hz] / 17s [60Hz]				16s	PSQ203 250Nm
Power Supply [V]	230 VAC 1~	115 VAC 1~	24 VAC 1~	400 V 3~	24 VDC	
Frequency [Hz]	50 / 60	50 / 60	50 / 60		-	
Rated Current [A]	0.45	1.2	5.5		3.2	
Maximum Current [A]	0.95	1.8	9		3.8	
Power Consumption) ² [W]	100	130	130		77	
Duty Cycle IEC 60034-1	S2 30 min / S4 50% ED - 1200c/h				see left	
Ambient Temperature [°C]	-20°C to +80°C (S2) / -20°C to +60°C (S4)				see left	
Overvoltage Category	II					
Motor Protection	Thermo Switch				Multifuse	

Operating Time/90°	28s [50Hz] / 23s [60Hz]				PSQ203 250Nm	
Power Supply [V]	230 VAC 1~	115 VAC 1~	24 VAC 1~	400 V 3~		24 VDC
Frequency [Hz]	50 / 60	50 / 60	50 / 60	50 / 60		
Rated Current [A]	0.32	0.61	2.9	0.15		
Maximum Current [A]	0.39	0.73	3.5	0.19		
Power Consumption) ² [W]	73	69	69	64		
Duty Cycle IEC 60034-1	S2 30min / S4 50% ED - 1200c/h					
Ambient Temperature [°C]	-20°C to +80°C (S2) / -20°C to +60°C (S4)					
Overvoltage Category	II					
Motor Protection	Thermo Switch) ³					

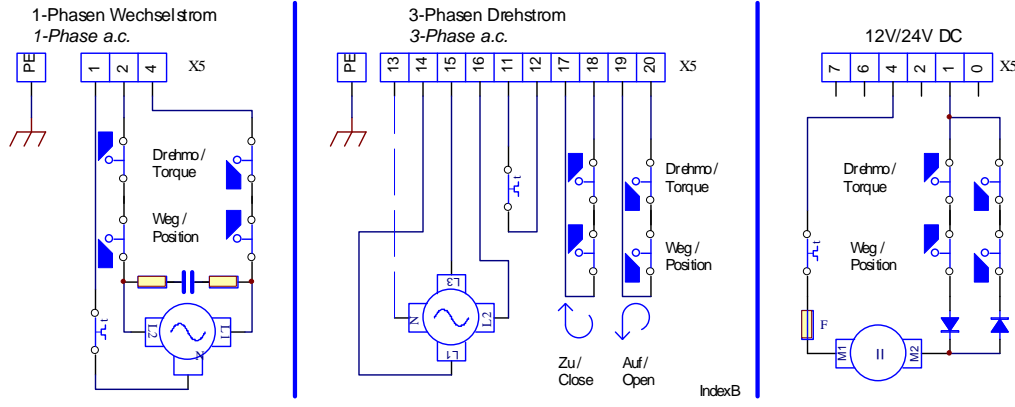
Operating Time/90°	69s [50Hz] / 57s [60Hz]				60s	PSQ203 250Nm
Power Supply [V]	230 VAC 1~	115 VAC 1~	24 VAC 1~	400 V 3~	24 VDC	
Frequency [Hz]	50 / 60	50 / 60	50 / 60	50 / 60	-	
Rated Current [A]	0.27	0.57	2.7	0.12	1.3	
Maximum Current [A]	0.33	0.68	3.3	0.15	2.5	
Power Consumption) ² [W]	62	64	64	51	30	
Duty Cycle IEC 60034-1	S2 30min / S4 50% ED @ 25°C					
Ambient Temperature [°C]	-20°C to +80°C (S2) / -20°C to +60°C (S4)					
Overvoltage Category	II					
Motor Protection	Thermo Switch) ³				Multifuse	

¹⁾ = Permissible average torque over the travel of 90°

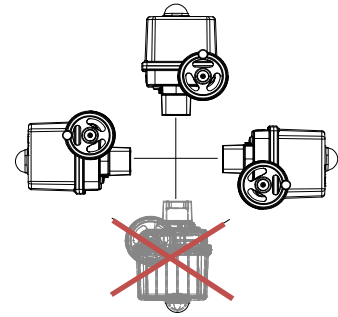
²⁾ = at switching torque and 50 Hz

³⁾ = Thermo switch must be wired externally at 400 VAC 3~

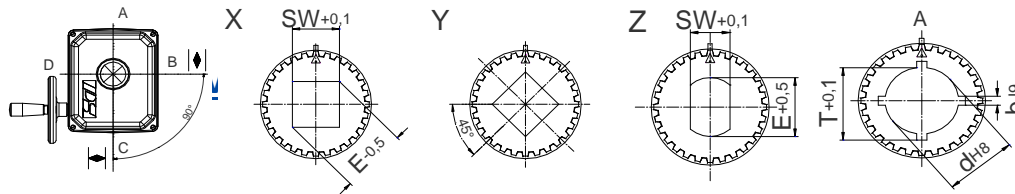
Wiring Diagramm



Mounting Position



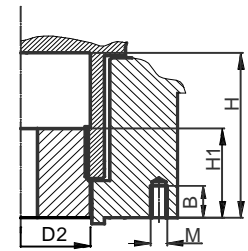
Available Drive Bushes



Square X or Y (45° turned)

Double D

Keyway



	F07	F10
D2	47	47
H	60	60
H1	35	35
M	M8	M10
B	16	20

Please check drive bushes datasheet for available sizes!
Other customized drive bushes on request!

Accessories/ Options	Power Supply	230 VAC 1~	115 VAC 1~	24 VAC 1~	400 V 3~	24 VDC
	Add'l Position Switch 2WE	•	•	•	•	•
	Add'l Position Switches Gold	•	•	•	•	•
	Add'l Torque Switches 2DE	•	•	•	•	•
	Add'l Torque Switches Gold	•	•	•	•	•
	Positioner PSAP	•	•	•) ⁴	•) ⁵	
	Position Transmitter PSPT	•	•	•	•	•
	Space Heater HR	•	•	•	•) ⁶	•
	Potentiometer PD	•	•	•	•	•
	Reversing Starter WSM				•	
Contactors 01						
Corrosion protection K2	Corrosion Protection K2 incl. Heating Resistor					
Increased enclosure IP	IP68 incl. Heating Resistor and Corrosion Protection K2					

For more information and accessories, visit our website www.ps-automation.com!

• = available, for further information see respective datasheet

)⁴ = PSAP with external relay required

)⁵ = only to be used with reversing starter contactor

)⁶ = supply voltage 24 V or 115-230 V possible

Subject to changes!