

# Valves

## Mechanically Actuated Valves

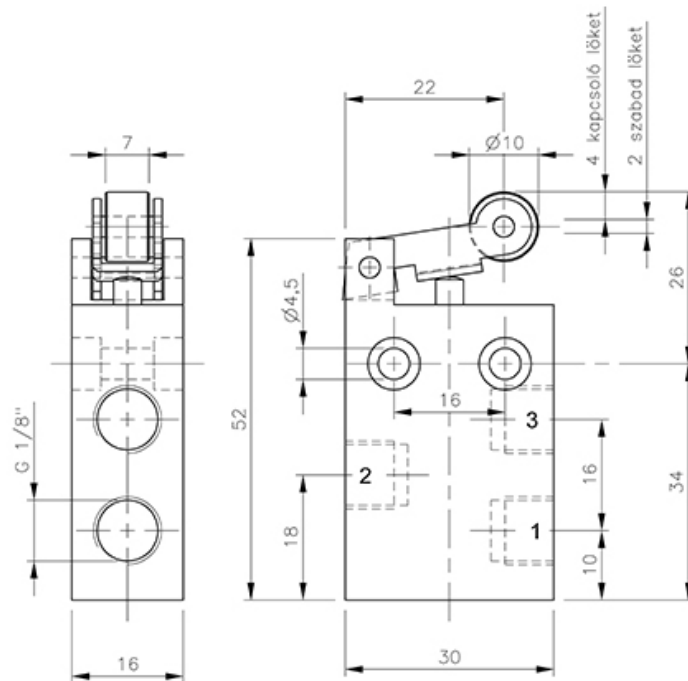
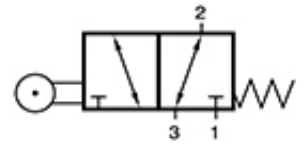
### 3/2-way valves

### Roller lever valves

### BR 311 301

Roller lever valve | monostable | mechanical spring return |  
universally usable - NC/NO

HAFNER



**Specifications**

|                           |                       |
|---------------------------|-----------------------|
| Port size                 | G 1/8                 |
| Air flow                  | 280 l/min             |
| Operating pressure        | -0,9...10 bar         |
| Actuating force           | 10 N                  |
| Function                  | spring return   NC/NO |
| Port size / port position | ports on the side     |

[www.hafner-pneumatika.com](http://www.hafner-pneumatika.com)