

Valves

Solenoid Valves

3/2-way valves

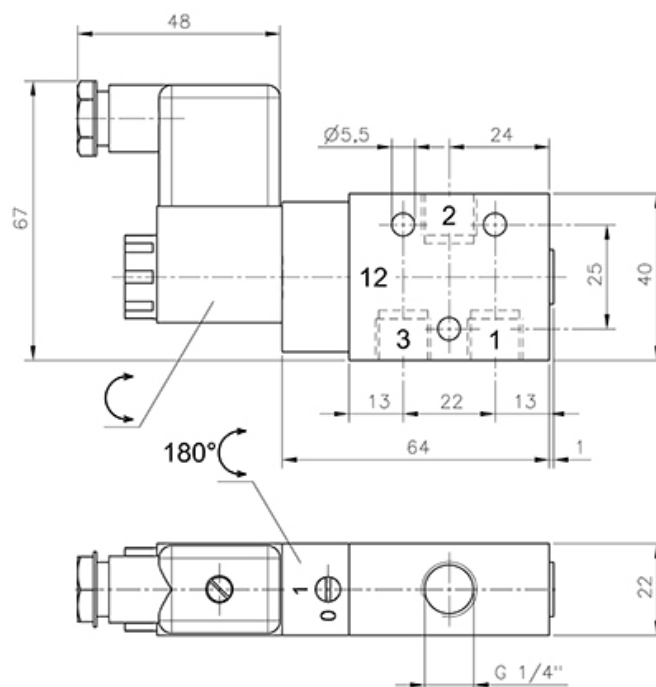
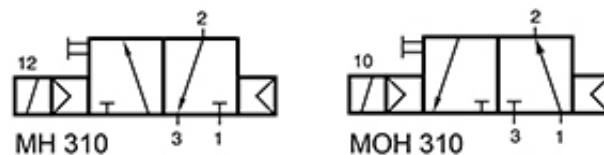
In-line valves

MH | In-line valves

MOH 310 701

Solenoid valve | monostable | air spring return | with manual override

HAFNER



Specifications

Port size	G 1/4"
Air flow	1250 l/min
Operating pressure	2...10 bar
Funktion	Single solenoid NO
Power consumption	3 W / 5 VA

--

www.hafner-pneumatika.com