

## Valves

### Solenoid Valves

#### 5/2-way valves

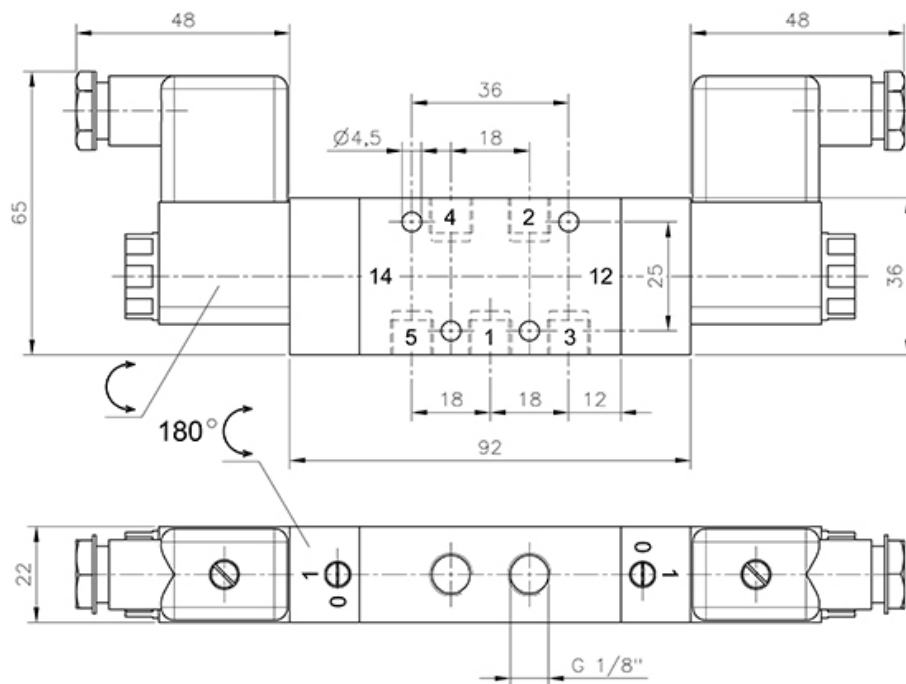
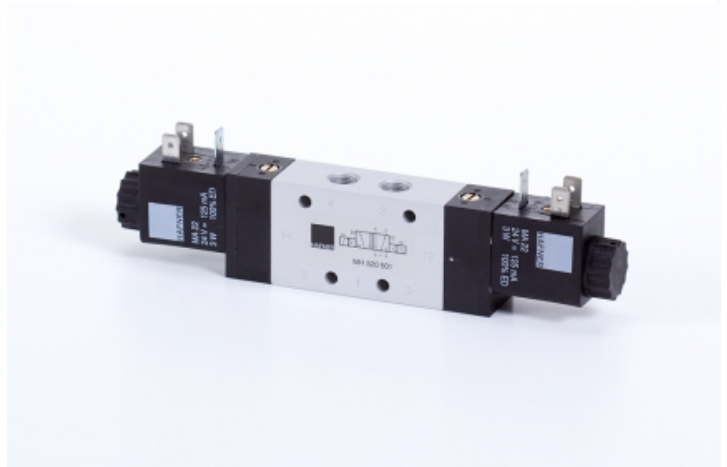
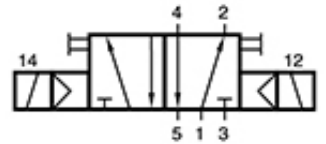
#### In-line valves

#### MH | in-line valves

#### MH 520 501

Solenoid valve | bistable | with manual override

HAFNER



**Specifications**

Port size	G 1/8"
Air flow	650 l/min
Operating pressure	2...10 bar
Funktion	Double solenoid
Power consumption	3 W / 5 VA

[www.hafner-pneumatika.com](http://www.hafner-pneumatika.com)