

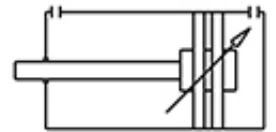
Cylinders

Profile cylinders | ISO 15552

HIF 125/500

Double acting cylinder | adjustable cushioning | magnetic piston
piston | enforced piston | H-series

HAFNER

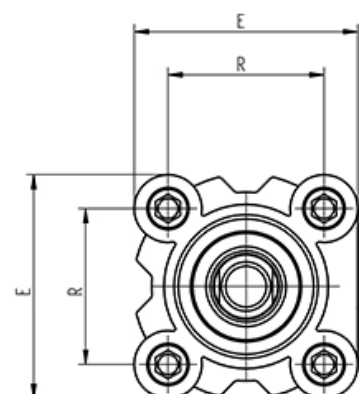
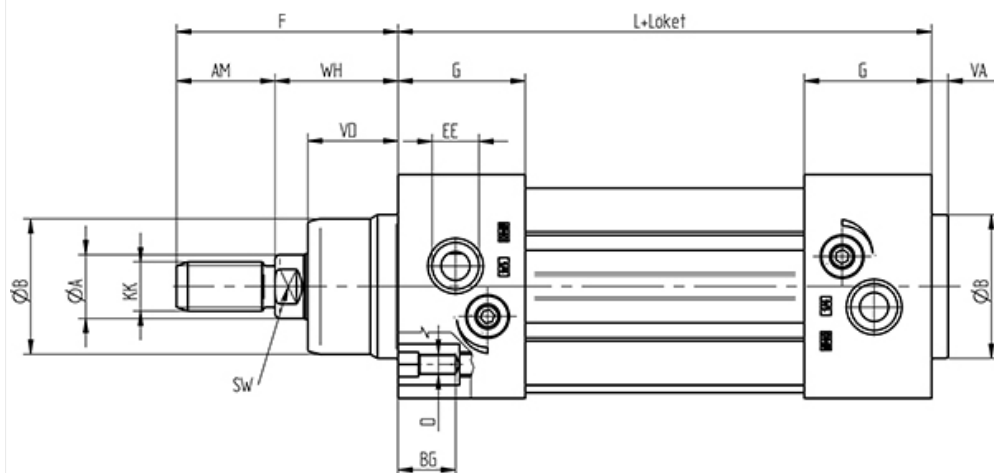


H-series: Profile cylinders according to ISO 15552.
Features: magnetic piston, adjustable cushioning.
Proximity switches can be mounted directly into the profile tube.
Mounting sizes and accessories according to VDMA 24562.
The fixing nut on the piston rod is part of the delivery content.

Diameter | Ø32 - Ø40 - Ø50 - Ø63 - Ø80 - Ø100 - Ø125 mm
Stroke | 25... 1000 mm, according to the chart below
Other non-standard strokes are available on request.

Medium | Air
Working pressure | 1 ... 10 bar
Temperature range | -20°C ... +80°C
Below 0°C air has to be dried.

Body | Anodized aluminum
Heads | Die-cast aluminum
Drive piston | Aluminum
Piston rod | Chromed steel
Guide bushing | Sintered bronze
Seals | PUR, NBR



| Type | Ø [mm] | A | B | D | E | F | G | L | R | AM | BG | EE | KK | SW | VA | VD | WH |
|-------------|--------|----|----|------|------|-----|------|-----|------|----|----|--------|-------------|----|----|------|----|
| HIF 32/... | Ø 32 | 12 | 30 | M 6 | 47 | 48 | 26,5 | 94 | 32,5 | 22 | 16 | G 1/8" | M 10 x 1,25 | 10 | 4 | 18 | 26 |
| HIF 40/... | Ø 40 | 16 | 35 | M 6 | 54,5 | 54 | 31 | 105 | 38 | 24 | 16 | G 1/4" | M 12 x 1,25 | 13 | 4 | 22 | 30 |
| HIF 50/... | Ø 50 | 20 | 40 | M 8 | 65 | 69 | 31 | 106 | 46,5 | 32 | 16 | G 1/4" | M 16 x 1,5 | 17 | 4 | 25,5 | 37 |
| HIF 63/... | Ø 63 | 20 | 45 | M 8 | 75 | 69 | 33,5 | 121 | 56,5 | 32 | 16 | G 3/8" | M 16 x 1,5 | 17 | 4 | 26 | 37 |
| HIF 80/... | Ø 80 | 25 | 45 | M 10 | 93 | 86 | 40 | 128 | 72 | 40 | 17 | G 3/8" | M 20 x 1,5 | 22 | 4 | 32 | 46 |
| HIF 100/... | Ø 100 | 25 | 55 | M 10 | 110 | 91 | 40,5 | 138 | 89 | 40 | 17 | G 1/2" | M 20 x 1,5 | 22 | 4 | 38 | 51 |
| HIF 125/... | Ø 125 | 32 | 60 | M 12 | 134 | 119 | 47 | 160 | 110 | 54 | 20 | G 1/2" | M 27 x 2 | 27 | 6 | 46 | 65 |

Specifications

| | |
|-----------------------|------------|
| Diameter | Ø 125 mm |
| Stroke | 500 mm |
| Connection | G 1/2" |
| Piston diameter | Ø 32 mm |
| Piston diameter, male | M 27 x 2 |
| Operating pressure | 1...10 bar |

www.hafner-pneumatika.com